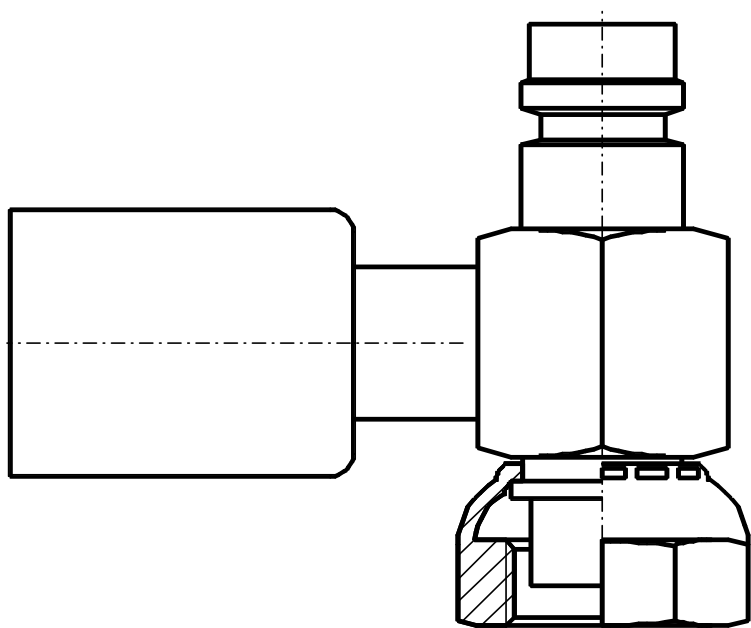


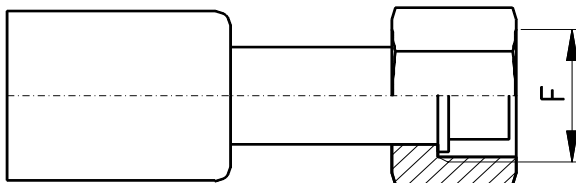
o.m.
OLEODINAMICA



AIR
GNZNOIHDZOC
GNZNOIHDZOC

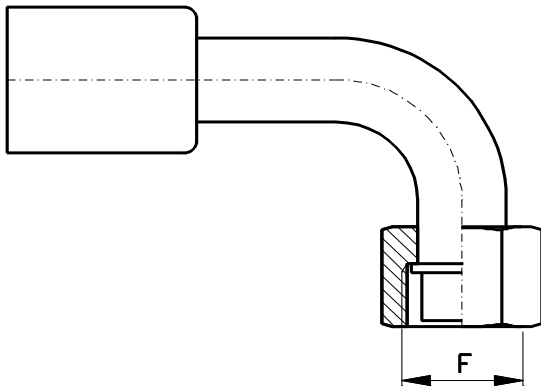
**RACCORDI IN ACCIAIO CON
CAMPANA**

RACCORDI FEMMINA CON O - RING



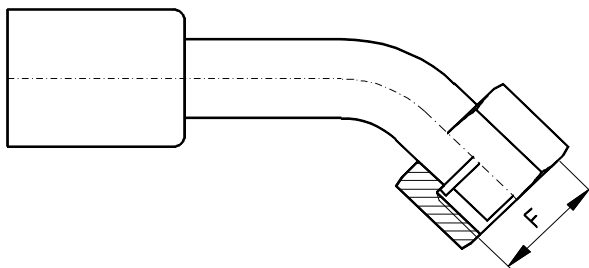
Femmina diritta O - Ring

codice	Size	D.I. Tubo (Pollici)	Raccordo	Filetto F
CP0507FO	6	5/16"	3/8"	5/8" -18 UNF
CP0708FO	8	13/32"	1/2"	3/4" - 16 UNF
CP0810FO	10	1/2"	5/8"	7/8" - 14 UNF
CP1010FO	12	5/8"	5/8"	7/8" - 14 UNF



Femmina 90° O - Ring

codice	Size	D.I. Tubo (Pollici)	Raccordo	Filetto F
CP0507FO90	6	5/16"	3/8"	5/8" -18 UNF
CP0708FO90	8	13/32"	1/2"	3/4" - 16 UNF
CP0810FO90	10	1/2"	5/8"	7/8" - 14 UNF
CP1010FO90	12	5/8"	5/8"	7/8" - 14 UNF

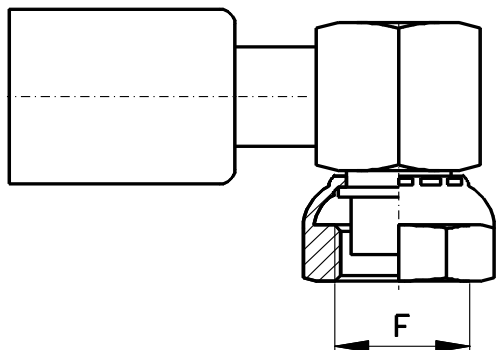


Femmina 45° O - Ring

codice	Size	D.I. Tubo (Pollici)	Raccordo	Filetto F
CP0507FO45	6	5/16"	3/8"	5/8" -18 UNF
CP0708FO45	8	13/32"	1/2"	3/4" - 16 UNF
CP0810FO45	10	1/2"	5/8"	7/8" - 14 UNF
CP1010FO45	12	5/8"	5/8"	7/8" - 14 UNF

**RACCORDI IN ACCIAIO CON
CAMPANA**

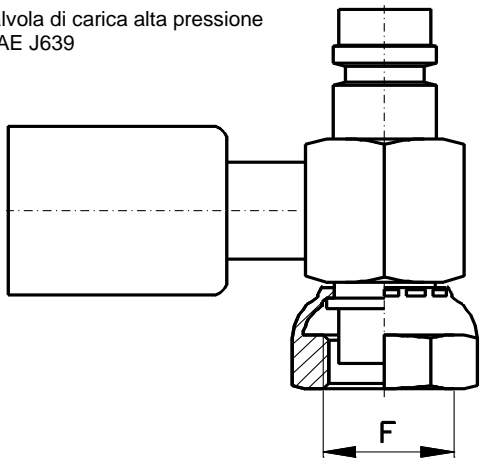
**RACCORDI FEMMINA 90° TIPO COMPATTO CON O SENZA
VALVOLA DI SERVIZIO**



Femmina 90° O - Ring tipo corto

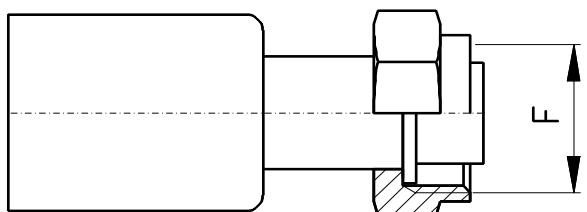
codice	Size	D.I. Tubo (Pollici)	Raccordo	Filetto F
CP0507FO90S	6	5/16"	3/8"	5/8" -18 UNF
CP0708FO90S	8	13/32"	1/2"	3/4" - 16 UNF
CP0810FO90S	10	1/2"	5/8"	7/8" - 14 UNF

Valvola di carica alta pressione
SAE J639

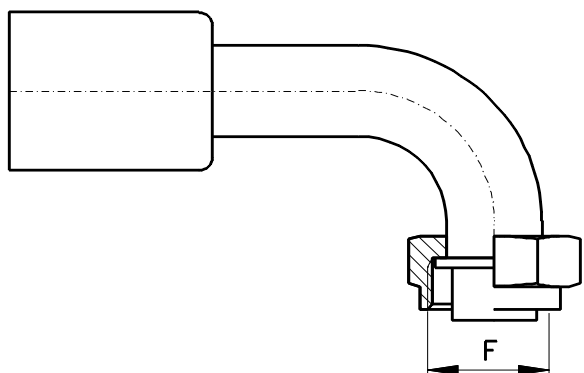


Femmina 90° O - Ring Tipo corto con valvola AP

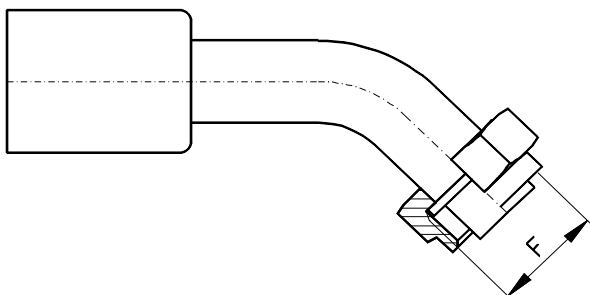
codice	Size	D.I. Tubo (Pollici)	Raccordo	Filetto F
CP0507FO90SVA	6	5/16"	3/8"	5/8" -18 UNF
CP0708FO90SVA	8	13/32"	1/2"	3/4" - 16 UNF

**RACCORDI IN ACCIAIO CON
CAMPANA**
RACCORDI FEMMINA TIPO ROTOLock

Femmina diritta O - Ring rotolock

codice	Size	D.I. Tubo (Pollici)	Raccordo	Filetto F
CP0716FOR	8	13/32	1"	1" - 14 UNF
CP0816FOR	10	1/2"	1"	1" - 14 UNF
CP1016FOR	12	5/8"	1"	1" - 14 UNF


Femmina 90° O - Ring rotolock

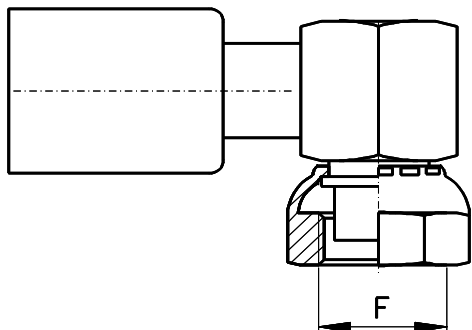
codice	Size	D.I. Tubo (Pollici)	Raccordo	Filetto F
CP0716FOR90	8	13/32	1"	1" - 14 UNF
CP0816FOR90	10	1/2"	1"	1" - 14 UNF
CP1016FOR90	12	5/8"	1"	1" - 14 UNF


Femmina 45° O - Ring rotolock

codice	Size	D.I. Tubo (Pollici)	Raccordo	Filetto F
CP0716FOR45	8	13/32	1"	1" - 14 UNF
CP0816FOR45	10	1/2"	1"	1" - 14 UNF
CP1016FOR45	12	5/8"	1"	1" - 14 UNF

**RACCORDI IN ACCIAIO CON
CAMPANA**

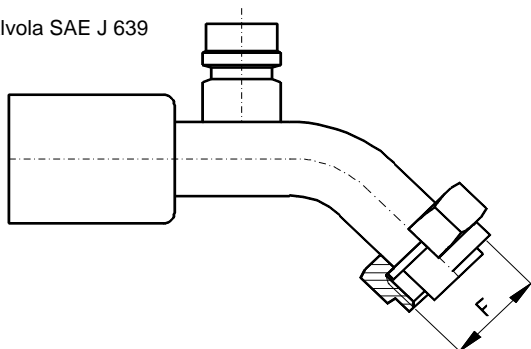
RACCORDI FEMMINATIPO ROTOLock



Femmina 90° O - Ring rotolock, tipo corto

codice	Size	D.I. Tubo (Pollici)	Raccordo	Filetto F
CP0716FOR90S	8	13/32	1"	1" - 14 UNF
CP0816FOR90S	10	1/2"	1"	1" - 14 UNF
CP1016FOR90S	12	5/8"	1"	1" - 14 UNF

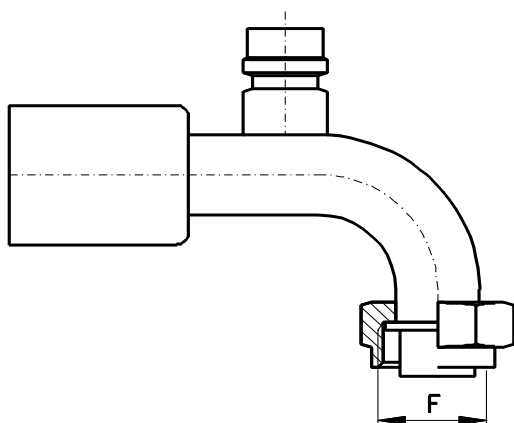
Valvola SAE J 639



Femmina 45° O - Ring con valvola

codice	Size	D.I. Tubo (Pollici)	Raccordo	Filetto F
CP0716FOR45VA	8	13/32"	1"	1" - 14 UNF
CP1816FOR45VB	10	1/2"	1"	1" - 14 UNF

Valvola SAE J 639



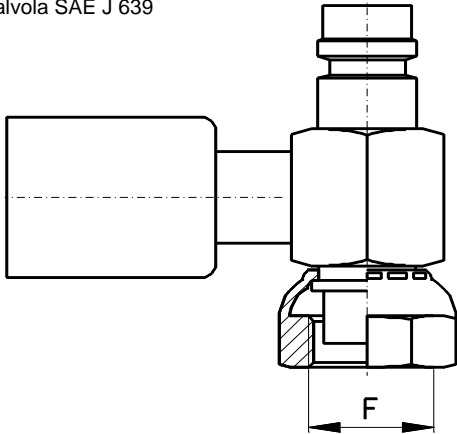
Femmina 90° O - Ring con valvola

codice	Size	D.I. Tubo (Pollici)	Raccordo	Filetto F
CP0716FOR90VA	8	13/32"	1"	1" - 14 UNF
CP1816FOR90VB	10	1/2"	1"	1" - 14 UNF

**RACCORDI IN ACCIAIO CON
CAMPANA**

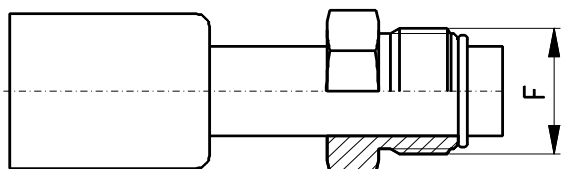
RACCORDI FEMMINA TIPO ROTOLOCK

Valvola SAE J 639

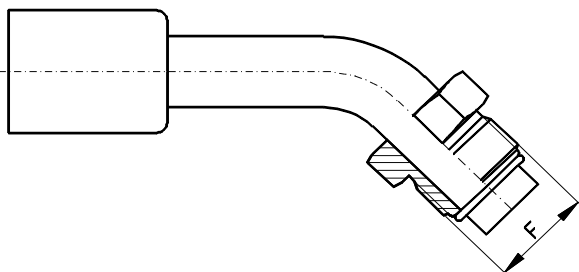


Femmina 90° O - Ring rotolock - Tipo corto con valvola BP

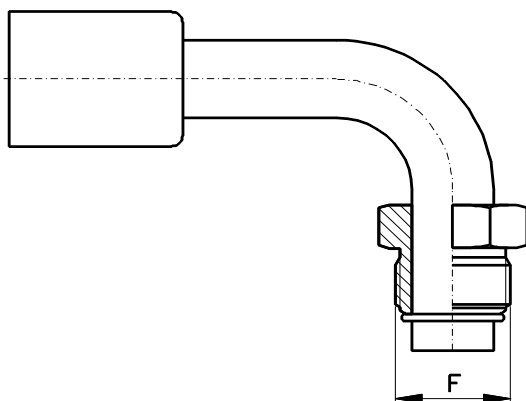
codice	Size	D.I. Tubo (Pollici)	Raccordo	Filetto F
CP0716FOR90SVA	8	13/32	1"	1" - 14 UNF
CP0816FOR90SVB	10	1/2"	1"	1" - 14 UNF
CP1016FOR90SVB	12	5/8"	1"	1" - 14 UNF

**RACCORDI IN ACCIAIO CON
CAMPANA**
RACCORDI MASCHIO CON O-RING

Maschio O - Ring

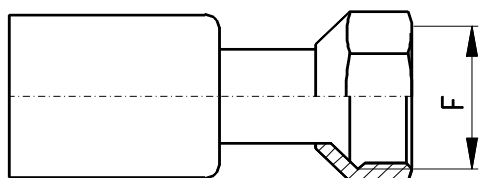
codice	Size	D.I. Tubo (Pollici)	Raccordo	Filetto F
CP0507MO	6	5/16"	3/8"	5/8" - 18 UNF
CP0708MO	8	13/32"	1/2"	3/4" - 18 UNS
CP0810MO	10	1/2"	5/8"	7/8" - 18 UNS
CP1010MO	12	5/8"	3/4"	7/8" - 14 UNS


Maschio 45° O - Ring

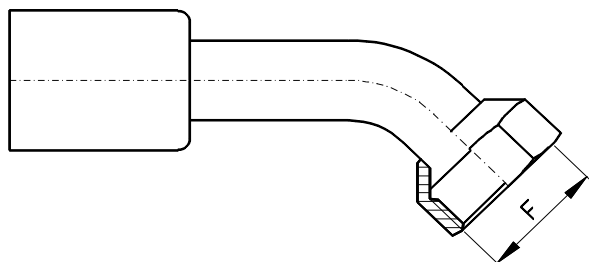
codice	Size	D.I. Tubo (Pollici)	Raccordo	Filetto F
CP0507MO45	6	5/16"	3/8"	5/8" - 18 UNF
CP0708MO45	8	13/32"	1/2"	3/4" - 18 UNS
CP0810MO45	10	1/2"	5/8"	7/8" - 18 UNS
CP1010MO45	12	5/8"	3/4"	7/8" - 14 UNS


Maschio 90° O - Ring

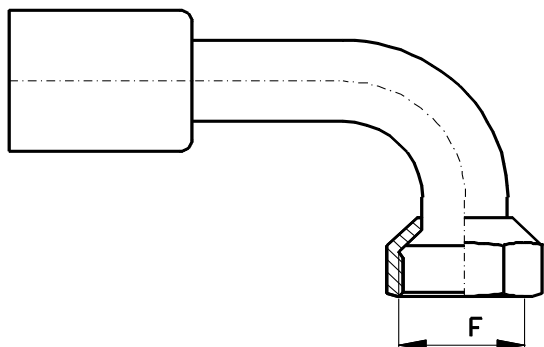
codice	Size	D.I. Tubo (Pollici)	Raccordo	Filetto F
CP0507MO90	6	5/16"	3/8"	5/8" - 18 UNF
CP0708MO90	8	13/32"	1/2"	3/4" - 18 UNS
CP0810MO90	10	1/2"	5/8"	7/8" - 18 UNS

**RACCORDI IN ACCIAIO CON
CAMPANA**
RACCORDI FEMMINA SAE CON SVASATURA A 45°

Femmina diritta con svasatura a 45°

codice	Size	D.I. Tubo (Pollici)	Raccordo	Filetto F
CP0507FIF	6	5/16"	3/8"	5/8" - 18 UNF
CP0708FIF	8	13/32"	1/2"	3/4" - 16 UNF
CP0810FIF	10	1/2"	5/8"	7/8" - 14 UNF
CP1017FIF	12	5/8"	3/4"	1,1/16" - 14 UNS


Femmina 45° con svasatura a 45°

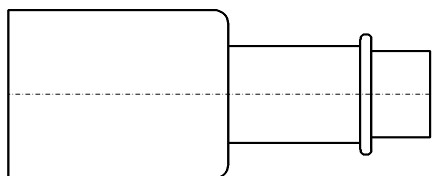
codice	Size	D.I. Tubo (Pollici)	Raccordo	Filetto F
CP0507FI45BF	6	5/16"	3/8"	5/8" - 18 UNF
CP0708FI45BF	8	13/32"	1/2"	3/4" - 16 UNF
CP0810FI45BF	10	1/2"	5/8"	7/8" - 14 UNF


Femmina 90° con svasatura a 45°

codice	Size	D.I. Tubo (Pollici)	Raccordo	Filetto F
CP0507FI90BF	6	5/16"	3/8"	5/8" - 18 UNF
CP0708FI90BF	8	13/32"	1/2"	3/4" - 16 UNF
CP0810FI90BF	10	1/2"	5/8"	7/8" - 14 UNF

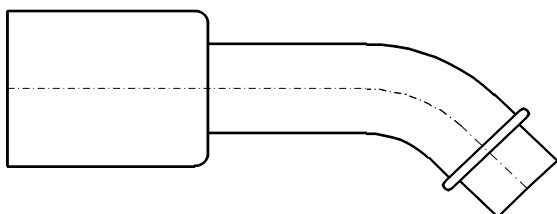
**RACCORDI IN ACCIAIO CON
CAMPANA**

RACCORDI PER VAVOLA DI ESPANSIONE



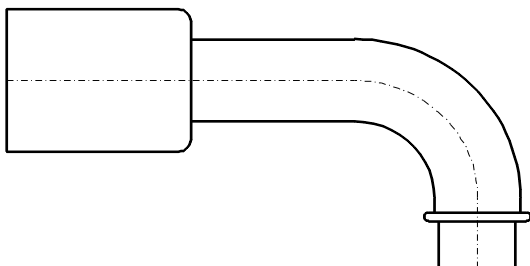
Raccordo diretto per valvola di espansione

codice	Size	D.I. Tubo (Pollici)	Tubo
CP05DVE	6	5/16"	6
CP08DVE	10	1/2"	10



Raccordo 45° per valvola di espansione

codice	Size	D.I. Tubo (Pollici)	Tubo
CP05DVE45	6	5/16"	6
CP08DVE45	10	1/2"	10

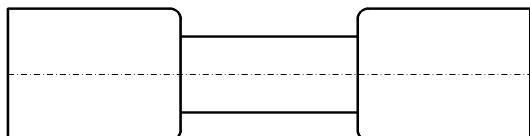


Raccordo 90° per valvola di espansione

codice	Size	D.I. Tubo (Pollici)	Tubo
CP05DVE90	6	5/16"	6
CP08DVE90	10	1/2"	10

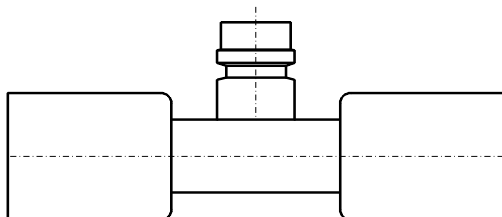
**RACCORDI IN ACCIAIO CON
CAMPANA**

GIUNZIONI CON E SENZA VALVOLA



Giunzione

codice	Size	D.I. Tubo (Pollici)	D.I. Tubo (Pollici)	
CP05G	6	5/16"	5/16"	
CP07G	8	13/32"	13/32"	
CP08G	10	1/2"	1/2"	
CP10G	12	5/8"	5/8"	



Giunzione con valvola

codice	Size	D.I. Tubo (Pollici)	D.I. Tubo (Pollici)	
CP05GVA	6	5/16"	5/16"	
CP07GVA	8	13/32"	13/32"	
CP08GVB	10	1/2"	1/2"	
CP10GVB	12	5/8"	5/8"	